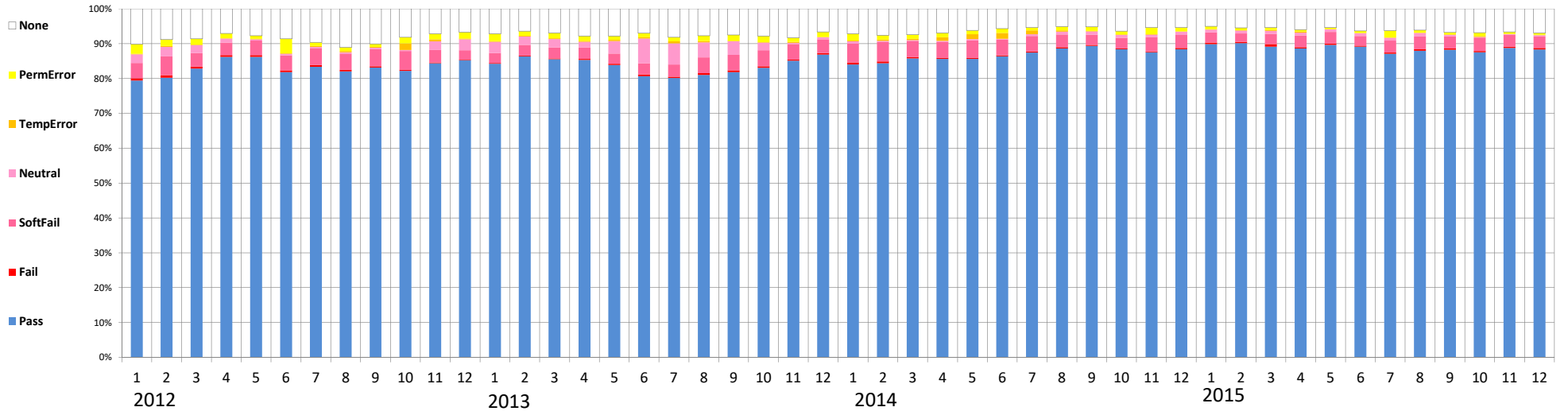


送信ドメイン認証結果の集計(SPF)(2023年9月時点)

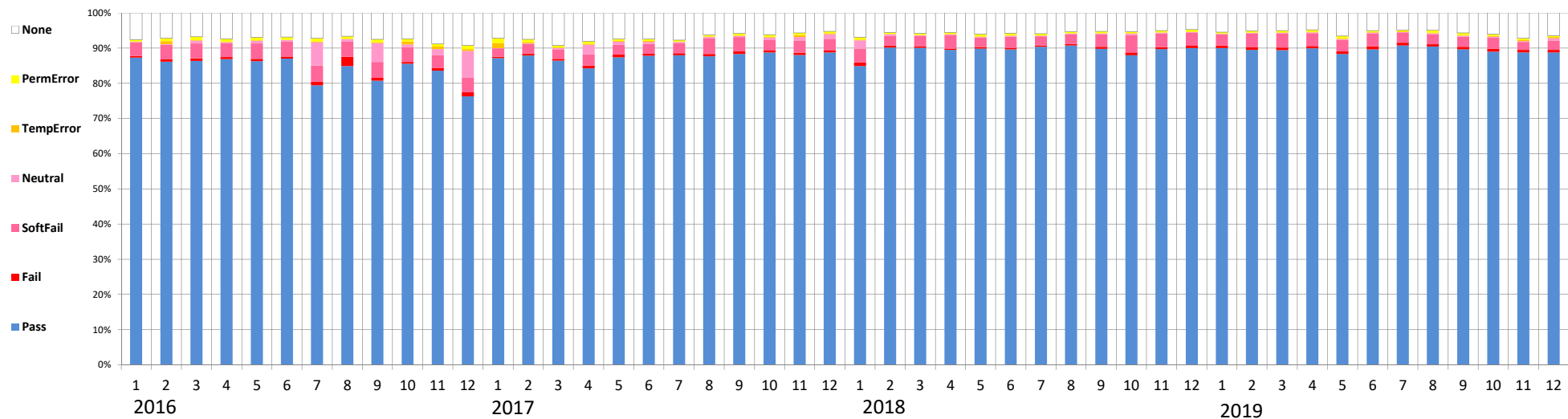
The number of data ISP the ratio of SPF	2012年												2013年												2014年												2015年											
	1月	2月	3月	4月	5月	6月	7月	8月	9月	10月	11月	12月	1月	2月	3月	4月	5月	6月	7月	8月	9月	10月	11月	12月	1月	2月	3月	4月	5月	6月	7月	8月	9月	10月	11月	12月	1月	2月	3月	4月	5月	6月	7月	8月	9月	10月	11月	12月
① None	10.16%	8.80%	8.59%	7.08%	7.70%	8.64%	9.62%	11.13%	10.07%	8.15%	7.12%	6.71%	7.13%	6.39%	6.96%	7.79%	7.84%	7.04%	8.18%	7.76%	7.53%	7.82%	8.31%	6.66%	7.18%	7.58%	7.47%	6.92%	6.21%	5.69%	5.42%	5.10%	5.16%	6.40%	5.40%	5.39%	5.07%	5.47%	5.41%	5.97%	5.39%	6.33%	6.29%	6.14%	6.81%	6.89%	6.65%	6.94%
② Neutral	2.47%	2.70%	2.26%	1.16%	0.37%	0.43%	0.44%	0.39%	0.33%	0.31%	2.47%	3.14%	3.22%	2.47%	2.45%	1.59%	3.56%	7.08%	6.01%	4.29%	3.85%	2.20%	0.38%	0.59%	0.64%	0.39%	0.21%	0.33%	0.36%	0.28%	0.51%	0.78%	0.90%	0.78%	0.70%	0.93%	0.78%	0.83%	0.84%	0.77%	0.74%	0.82%	0.83%	1.01%	0.37%	0.19%	0.15%	0.39%
③ Pass	79.42%	80.25%	82.84%	86.23%	86.23%	81.84%	83.37%	82.04%	83.14%	82.20%	84.39%	85.23%	84.24%	86.36%	85.52%	85.35%	83.83%	80.66%	80.11%	80.99%	81.78%	83.04%	85.08%	86.88%	84.04%	84.37%	85.78%	85.63%	85.59%	86.32%	87.43%	86.62%	89.37%	88.37%	87.52%	88.40%	89.84%	80.12%	89.13%	88.58%	89.64%	89.09%	87.08%	87.93%	88.26%	87.50%	88.78%	88.29%
④ Fail	0.62%	0.67%	0.57%	0.51%	0.47%	0.50%	0.49%	0.43%	0.34%	0.28%	0.22%	0.16%	0.19%	0.18%	0.21%	0.27%	0.38%	0.49%	0.39%	0.52%	0.51%	0.46%	0.33%	0.42%	0.55%	0.52%	0.36%	0.28%	0.33%	0.30%	0.32%	0.34%	0.30%	0.25%	0.24%	0.32%	0.42%	0.39%	0.70%	0.42%	0.35%	0.33%	0.35%	0.42%	0.38%	0.39%	0.33%	0.47%
⑤ SoftFail	4.42%	5.40%	3.86%	3.59%	4.19%	4.31%	4.78%	4.68%	5.01%	5.38%	3.56%	2.69%	2.84%	3.05%	3.16%	3.28%	2.92%	3.21%	3.52%	4.58%	4.49%	4.98%	4.43%	3.96%	5.44%	5.52%	4.69%	4.54%	5.05%	4.51%	4.44%	3.66%	2.91%	3.05%	4.08%	3.74%	2.96%	2.43%	2.95%	3.37%	3.34%	2.73%	3.40%	3.66%	3.45%	3.84%	3.43%	3.27%
⑥ TempError	0.15%	0.28%	0.16%	0.08%	0.10%	0.12%	0.28%	0.33%	0.23%	1.92%	0.58%	0.21%	0.23%	0.18%	0.22%	0.38%	0.43%	0.40%	0.58%	0.38%	0.13%	0.16%	0.30%	0.09%	0.19%	0.33%	0.31%	1.00%	1.35%	1.64%	1.11%	0.37%	0.19%	0.18%	0.10%	0.12%	0.06%	0.30%	0.40%	0.11%	0.08%	0.06%	0.10%	0.16%	0.26%	0.13%	0.11%	
⑦ PermError	2.78%	1.89%	1.72%	1.38%	0.83%	4.16%	1.07%	1.01%	0.88%	1.77%	1.65%	1.85%	2.15%	1.38%	1.48%	1.37%	1.03%	1.13%	1.20%	1.48%	1.69%	1.74%	1.18%	1.44%	1.97%	1.29%	1.17%	1.28%	1.11%	1.25%	0.78%	1.13%	1.18%	0.89%	1.87%	1.11%	0.80%	0.70%	0.68%	0.50%	0.43%	0.62%	1.98%	0.71%	0.58%	0.83%	0.53%	0.53%



※出典:電気通信事業者9社の協力により、総務省がとりまとめ

送信ドメイン認証結果の集計(SPF)(2023年9月時点)

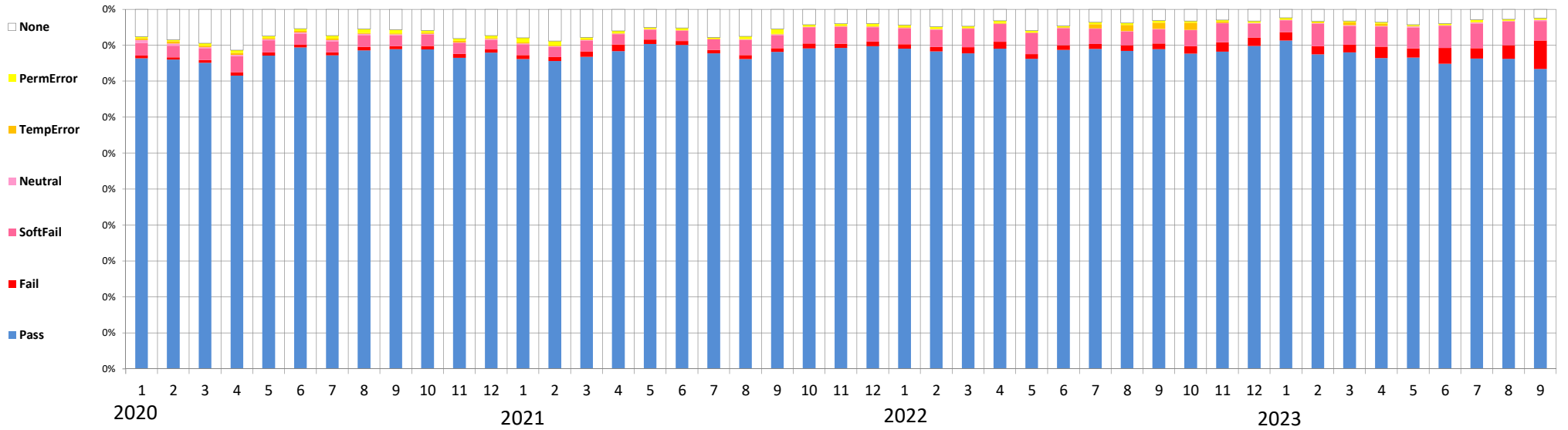
The number of data ISP the ratio of SPF	2016年												2017年												2018年												2019年											
	1月	2月	3月	4月	5月	6月	7月	8月	9月	10月	11月	12月	1月	2月	3月	4月	5月	6月	7月	8月	9月	10月	11月	12月	1月	2月	3月	4月	5月	6月	7月	8月	9月	10月	11月	12月	1月	2月	3月	4月	5月	6月	7月	8月	9月	10月	11月	12月
① None	7.58%	7.28%	6.77%	7.34%	6.95%	6.88%	7.20%	6.64%	7.48%	7.35%	8.84%	9.26%	7.24%	7.52%	9.28%	8.09%	7.49%	7.45%	7.70%	6.26%	5.88%	6.24%	5.69%	5.26%	6.95%	5.54%	5.83%	5.57%	6.04%	5.76%	5.89%	5.30%	5.23%	5.32%	5.04%	4.73%	5.44%	5.09%	5.00%	4.80%	6.60%	5.04%	4.87%	4.97%	5.72%	6.07%	7.19%	6.47%
② Neutral	0.11%	0.13%	0.82%	0.28%	0.72%	0.47%	6.56%	0.69%	5.30%	0.72%	1.74%	7.64%	0.06%	0.12%	0.37%	2.76%	0.89%	0.60%	0.34%	0.48%	0.31%	0.79%	1.06%	1.35%	2.35%	0.44%	0.16%	0.14%	0.17%	0.22%	0.17%	0.25%	0.28%	0.35%	0.23%	0.24%	0.19%	0.20%	0.17%	0.24%	0.26%	0.26%	0.23%	0.22%	0.24%	0.27%	0.24%	0.61%
③ Pass	87.31%	86.10%	86.33%	86.65%	86.28%	87.01%	79.37%	84.92%	80.74%	85.54%	83.60%	76.26%	87.18%	87.90%	86.45%	84.24%	87.37%	87.82%	87.95%	87.68%	88.29%	88.76%	88.00%	88.75%	84.86%	90.17%	90.05%	89.50%	89.84%	89.64%	90.34%	90.72%	89.60%	87.95%	89.72%	90.01%	89.99%	89.48%	89.40%	89.92%	88.31%	89.64%	90.72%	90.46%	89.62%	89.00%	88.75%	88.74%
④ Fail	0.42%	0.69%	0.72%	0.61%	0.65%	0.61%	1.08%	2.61%	0.79%	0.51%	0.74%	1.15%	0.35%	0.56%	0.47%	0.82%	0.81%	0.60%	0.58%	0.63%	0.78%	0.62%	0.70%	0.65%	1.01%	0.52%	0.40%	0.38%	0.42%	0.44%	0.36%	0.43%	0.60%	0.81%	0.58%	0.68%	0.77%	0.76%	0.71%	0.69%	0.75%	0.87%	0.78%	0.60%	0.78%	0.76%	0.73%	0.75%
⑤ SoftFail	3.90%	4.13%	4.27%	3.93%	4.41%	4.18%	4.62%	4.30%	4.58%	4.26%	3.62%	4.15%	2.39%	2.73%	2.71%	3.16%	2.78%	2.75%	2.88%	4.37%	4.08%	2.84%	3.38%	3.22%	3.98%	2.81%	3.06%	3.88%	2.69%	3.20%	2.66%	2.72%	3.50%	4.97%	3.84%	3.63%	3.09%	3.84%	4.01%	3.62%	3.25%	3.63%	2.79%	2.86%	2.85%	3.17%	2.25%	2.65%
⑥ TempError	0.18%	0.91%	0.11%	0.14%	0.11%	0.11%	0.28%	0.13%	0.28%	0.84%	0.76%	0.52%	1.51%	0.36%	0.13%	0.27%	0.16%	0.29%	0.10%	0.15%	0.17%	0.16%	0.61%	0.25%	0.18%	0.09%	0.05%	0.09%	0.15%	0.09%	0.08%	0.08%	0.08%	0.14%	0.09%	0.13%	0.12%	0.10%	0.20%	0.21%	0.22%	0.19%	0.20%	0.23%	0.25%	0.29%	0.33%	0.36%
⑦ PermError	0.50%	0.77%	0.97%	0.84%	0.88%	0.78%	0.92%	0.71%	0.87%	0.77%	0.70%	1.03%	1.28%	0.82%	0.60%	0.67%	0.48%	0.49%	0.48%	0.43%	0.53%	0.59%	0.57%	0.52%	0.67%	0.43%	0.45%	0.45%	0.69%	0.64%	0.50%	0.50%	0.50%	0.48%	0.51%	0.58%	0.39%	0.54%	0.51%	0.51%	0.60%	0.36%	0.40%	0.66%	0.55%	0.45%	0.51%	0.42%



※出典：電気通信事業者9社の協力により、総務省がとりまとめ

送信ドメイン認証結果の集計(SPF)(2023年9月時点)

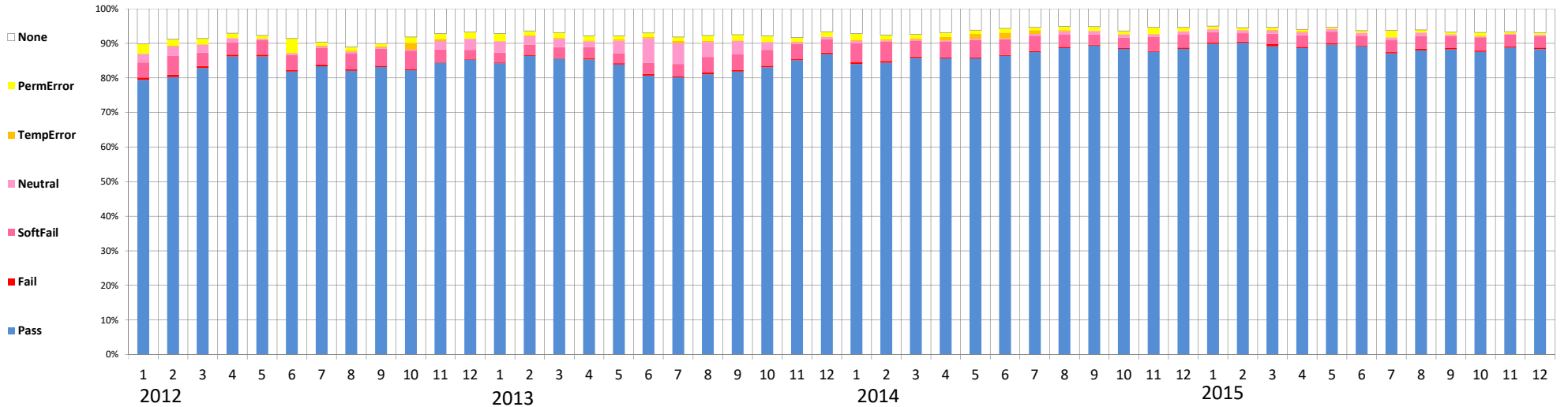
	2020年												2021年												2022年												2023年																
	1月	2月	3月	4月	5月	6月	7月	8月	9月	10月	11月	12月	1月	2月	3月	4月	5月	6月	7月	8月	9月	10月	11月	12月	1月	2月	3月	4月	5月	6月	7月	8月	9月	1月	2月	3月	4月	5月	6月	7月	8月	9月											
The number of data ISP	7	7	7	7	7	7	7	7	7	7	7	7	7	7	8	8	8	8	8	8	8	9	9	9	9	9	9	9	9	9	9	9	9	9	9	9	9	9	9	9	9	9	9	9	9	9	9	9	9	9	9	9	9
The ratio of SPF																																																					
① None	7.62%	8.46%	9.48%	11.36%	7.43%	5.41%	7.30%	5.46%	5.67%	5.86%	8.12%	7.33%	7.93%	8.85%	7.82%	6.04%	5.08%	5.21%	7.83%	7.53%	5.49%	4.29%	4.01%	3.96%	4.39%	4.88%	4.71%	3.21%	5.94%	4.61%	3.61%	3.82%	3.15%	3.23%	3.00%	3.27%	2.38%	3.31%	3.24%	3.59%	4.28%	3.94%	2.95%	2.78%	2.46%								
② Neutral	0.87%	0.62%	0.26%	0.31%	0.28%	0.30%	0.30%	0.24%	0.25%	0.16%	0.19%	0.17%	0.19%	0.17%	0.19%	0.14%	0.07%	0.07%	0.06%	0.06%	0.20%	0.07%	0.07%	0.09%	0.09%	0.12%	0.09%	0.07%	0.08%	0.07%	0.10%	0.07%	0.13%	0.08%	0.07%	0.14%	0.08%	0.14%	0.24%	0.13%	0.33%	0.12%	0.26%	0.18%	0.24%								
③ Pass	86.37%	86.01%	85.10%	81.57%	87.14%	89.36%	87.16%	88.54%	88.89%	88.84%	86.49%	87.96%	86.15%	85.57%	86.78%	88.37%	90.31%	90.05%	87.75%	86.16%	88.17%	89.14%	89.22%	89.72%	89.05%	88.30%	87.75%	89.04%	86.23%	88.71%	88.96%	88.40%	88.92%	87.67%	88.21%	89.80%	91.29%	87.44%	87.99%	86.39%	86.55%	84.87%	86.31%	86.19%	83.38%								
④ Fail	0.72%	0.64%	0.76%	0.93%	0.84%	0.78%	0.87%	1.01%	0.86%	0.95%	1.08%	0.88%	1.08%	1.11%	1.53%	1.82%	1.25%	1.15%	0.92%	1.09%	1.01%	1.32%	1.19%	1.32%	1.23%	1.19%	1.71%	1.90%	1.30%	1.26%	1.37%	1.59%	1.55%	2.06%	2.63%	2.34%	2.38%	2.32%	2.19%	3.22%	2.98%	4.38%	2.85%	3.80%	7.96%								
⑤ SoftFail	3.50%	3.22%	3.34%	4.49%	3.37%	3.11%	3.10%	3.29%	3.00%	3.14%	2.95%	2.69%	3.05%	2.86%	2.98%	2.90%	2.75%	2.85%	2.95%	4.28%	3.64%	4.54%	4.77%	4.00%	4.44%	4.82%	5.12%	4.98%	5.85%	4.79%	4.24%	3.89%	3.93%	4.44%	5.28%	3.90%	3.28%	6.25%	5.15%	5.60%	5.77%	6.15%	6.91%	6.57%	5.42%								
⑥ TempError	0.46%	0.57%	0.42%	0.54%	0.39%	0.41%	0.42%	0.33%	0.34%	0.32%	0.46%	0.27%	0.31%	0.24%	0.19%	0.17%	0.12%	0.08%	0.07%	0.15%	0.12%	0.07%	0.15%	0.17%	0.22%	0.12%	0.15%	0.17%	0.14%	0.15%	1.19%	1.70%	1.73%	2.03%	0.41%	0.09%	0.10%	0.16%	0.76%	0.62%	0.11%	0.13%	0.06%	0.05%	0.05%								
⑦ PermError	0.46%	0.47%	0.65%	0.79%	0.55%	0.64%	0.84%	1.08%	0.99%	0.64%	0.64%	0.70%	1.28%	1.19%	0.51%	0.57%	0.41%	0.59%	0.42%	0.74%	1.36%	0.56%	0.58%	0.74%	0.58%	0.60%	0.46%	0.62%	0.46%	0.40%	0.52%	0.54%	0.59%	0.50%	0.39%	0.46%	0.50%	0.37%	0.43%	0.45%	0.37%	0.41%	0.67%	0.42%	0.49%								



※出典: 電気通信事業者9社の協力により、総務省がとりまとめ

The situation of SPF (as of September 2023)

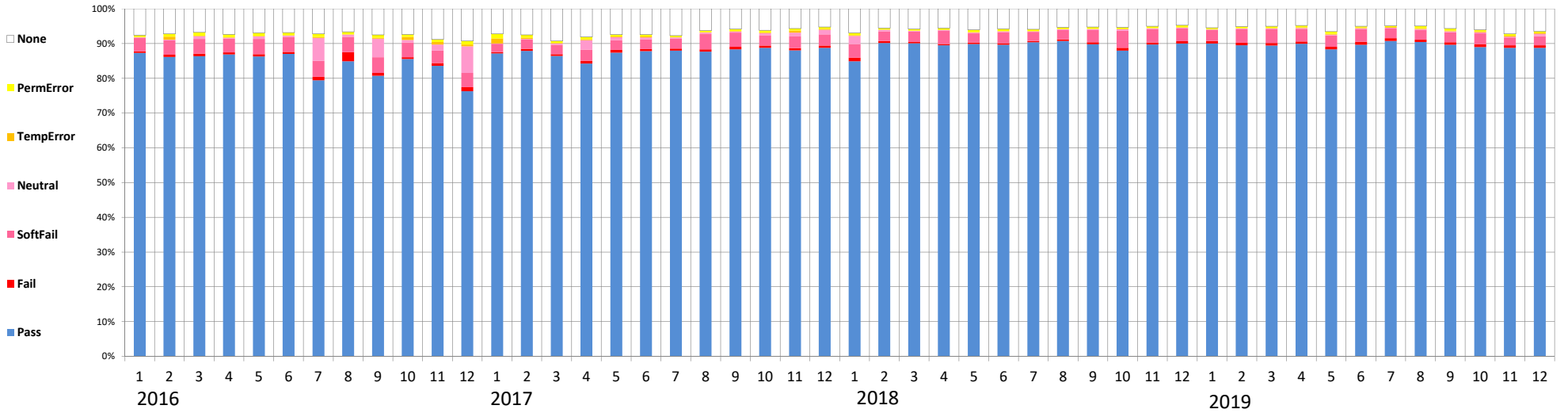
The number of data ISP the ratio of SPF	2012年												2013年												2014年												2015年											
	1月	2月	3月	4月	5月	6月	7月	8月	9月	10月	11月	12月	1月	2月	3月	4月	5月	6月	7月	8月	9月	10月	11月	12月	1月	2月	3月	4月	5月	6月	7月	8月	9月	10月	11月	12月	1月	2月	3月	4月	5月	6月	7月	8月	9月	10月	11月	12月
① None	10.16%	8.80%	8.59%	7.06%	7.70%	8.64%	9.62%	11.13%	10.07%	8.15%	7.12%	6.71%	7.13%	6.39%	6.96%	7.79%	7.84%	7.04%	8.18%	7.76%	7.53%	7.82%	8.31%	6.66%	7.18%	7.58%	7.47%	6.92%	6.21%	5.69%	5.42%	5.10%	5.16%	6.40%	5.40%	5.39%	5.07%	5.47%	5.41%	5.97%	5.39%	6.33%	6.29%	6.14%	6.81%	6.89%	6.65%	6.94%
② Neutral	2.47%	2.70%	2.26%	1.16%	0.37%	0.43%	0.44%	0.39%	0.33%	0.31%	2.47%	3.14%	3.22%	2.47%	2.45%	1.59%	3.56%	7.08%	6.01%	4.29%	3.85%	2.20%	0.38%	0.59%	0.64%	0.39%	0.21%	0.33%	0.36%	0.28%	0.51%	0.78%	0.90%	0.78%	0.70%	0.93%	0.78%	0.83%	0.84%	0.77%	0.74%	0.82%	0.83%	1.01%	0.37%	0.19%	0.15%	0.39%
③ Pass	79.42%	80.25%	82.84%	86.23%	86.23%	81.84%	83.37%	82.04%	83.14%	82.20%	84.39%	85.23%	84.24%	86.36%	85.52%	85.35%	83.83%	80.66%	80.11%	80.99%	81.78%	83.04%	85.08%	86.88%	84.04%	84.37%	85.78%	85.63%	85.59%	86.32%	87.43%	86.62%	89.37%	88.37%	87.52%	88.40%	89.84%	80.12%	89.13%	88.58%	89.64%	89.09%	87.08%	87.93%	88.26%	87.50%	88.78%	88.29%
④ Fail	0.62%	0.67%	0.57%	0.51%	0.47%	0.50%	0.49%	0.43%	0.34%	0.28%	0.22%	0.16%	0.19%	0.18%	0.21%	0.27%	0.38%	0.49%	0.39%	0.52%	0.51%	0.46%	0.33%	0.42%	0.55%	0.52%	0.36%	0.28%	0.33%	0.30%	0.32%	0.34%	0.30%	0.25%	0.24%	0.32%	0.42%	0.39%	0.70%	0.42%	0.35%	0.33%	0.35%	0.42%	0.38%	0.39%	0.33%	0.47%
⑤ SoftFail	4.42%	5.40%	3.86%	3.59%	4.19%	4.31%	4.78%	4.68%	5.01%	5.38%	3.56%	2.69%	2.84%	3.05%	3.16%	3.28%	2.92%	3.21%	3.52%	4.58%	4.49%	4.58%	4.43%	3.96%	5.44%	5.52%	4.69%	4.54%	5.05%	4.51%	4.44%	3.66%	2.91%	3.05%	4.08%	3.74%	2.96%	2.43%	2.95%	3.37%	3.34%	2.73%	3.40%	3.66%	3.45%	3.84%	3.43%	3.27%
⑥ TempError	0.15%	0.28%	0.16%	0.08%	0.10%	0.12%	0.28%	0.33%	0.23%	1.92%	0.58%	0.21%	0.23%	0.18%	0.22%	0.38%	0.43%	0.40%	0.58%	0.38%	0.13%	0.16%	0.30%	0.09%	0.19%	0.33%	0.31%	1.00%	1.35%	1.64%	1.11%	0.37%	0.19%	0.18%	0.18%	0.10%	0.12%	0.06%	0.30%	0.40%	0.11%	0.08%	0.06%	0.10%	0.16%	0.26%	0.13%	0.11%
⑦ PermError	2.76%	1.89%	1.72%	1.38%	0.83%	4.16%	1.07%	1.01%	0.88%	1.77%	1.65%	1.85%	2.15%	1.38%	1.48%	1.37%	1.03%	1.13%	1.20%	1.48%	1.69%	1.74%	1.18%	1.44%	1.97%	1.29%	1.17%	1.28%	1.11%	1.25%	0.78%	1.13%	1.18%	0.89%	1.87%	1.11%	0.80%	0.70%	0.88%	0.50%	0.43%	0.82%	1.98%	0.71%	0.58%	0.83%	0.53%	



* With cooperation of domestic ISP 9 companies, MIC compiled.
 * In the E-mail which is circulating.

The situation of SPF (as of September 2023)

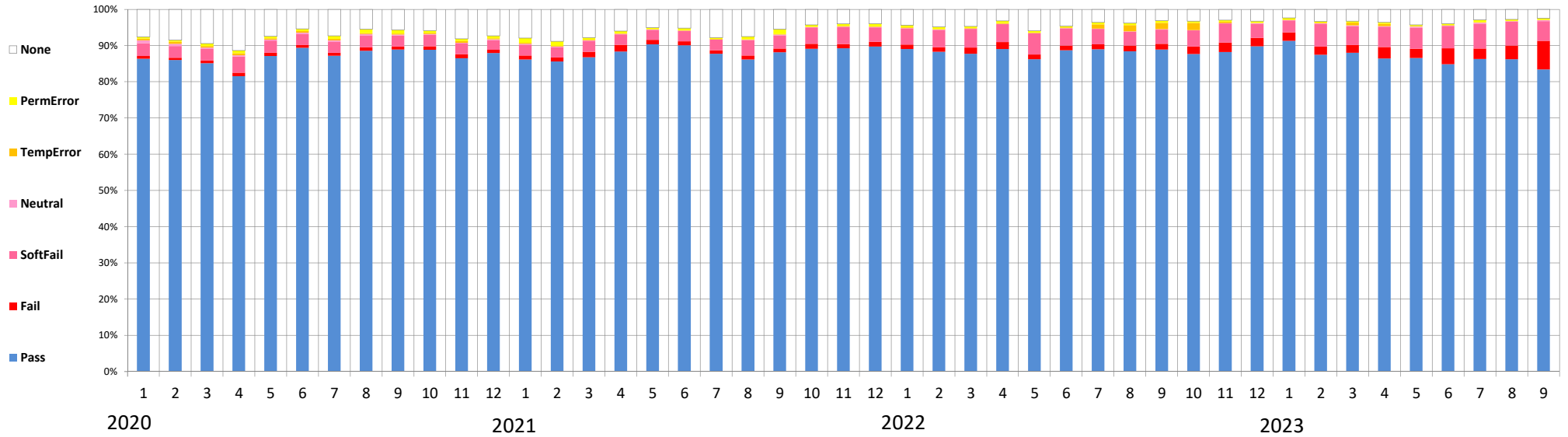
The number of data ISP the ratio of SPF	2016年												2017年												2018年												2019年																																			
	1月	2月	3月	4月	5月	6月	7月	8月	9月	10月	11月	12月	1月	2月	3月	4月	5月	6月	7月	8月	9月	10月	11月	12月	1月	2月	3月	4月	5月	6月	7月	8月	9月	10月	11月	12月	1月	2月	3月	4月	5月	6月	7月	8月	9月	10月	11月	12月																								
(1) None	7.58%	7.28%	6.77%	7.34%	6.95%	6.88%	7.20%	6.64%	7.48%	7.35%	8.84%	9.36%	7.24%	7.52%	9.28%	8.09%	7.49%	7.45%	7.70%	6.26%	5.86%	6.24%	5.69%	5.26%	6.95%	5.54%	5.83%	5.57%	6.04%	5.76%	5.89%	5.30%	5.23%	5.32%	5.04%	4.73%	5.44%	5.00%	5.00%	4.80%	6.60%	5.04%	4.87%	4.97%	5.72%	6.07%	7.19%	6.47%	5.44%	5.00%	5.00%	4.80%	6.60%	5.04%	4.87%	4.97%	5.72%	6.07%	7.19%	6.47%												
(2) Neutral	0.11%	0.13%	0.82%	0.28%	0.72%	0.47%	0.56%	0.69%	5.30%	0.72%	1.74%	7.64%	0.06%	0.12%	0.37%	2.76%	0.89%	0.60%	0.34%	0.48%	0.31%	0.79%	1.06%	1.35%	0.06%	0.12%	0.37%	2.76%	0.89%	0.60%	0.34%	0.48%	0.31%	0.79%	1.06%	1.35%	2.35%	0.44%	0.16%	0.14%	0.17%	0.22%	0.17%	0.25%	0.28%	0.35%	0.23%	0.24%	0.19%	0.20%	0.17%	0.24%	0.26%	0.26%	0.23%	0.22%	0.24%	0.27%	0.24%	0.61%	0.19%	0.20%	0.17%	0.24%	0.26%	0.26%	0.23%	0.22%	0.24%	0.27%	0.24%	0.61%
(3) Pass	87.31%	86.10%	86.33%	86.65%	86.28%	87.01%	79.37%	84.92%	80.74%	85.54%	83.60%	76.26%	87.18%	87.90%	86.45%	84.24%	87.37%	87.82%	87.95%	87.68%	88.29%	88.76%	88.00%	88.75%	84.86%	90.17%	90.05%	89.50%	89.84%	89.64%	90.34%	90.72%	89.60%	87.95%	89.72%	90.01%	89.99%	89.48%	89.40%	89.92%	88.31%	89.64%	90.72%	90.46%	89.62%	89.00%	88.75%	88.74%	89.99%	89.48%	89.40%	89.92%	88.31%	89.64%	90.72%	90.46%	89.62%	89.00%	88.75%	88.74%												
(4) Fail	0.42%	0.69%	0.72%	0.61%	0.65%	0.61%	1.08%	2.61%	0.79%	0.51%	0.74%	1.15%	0.35%	0.56%	0.47%	0.82%	0.81%	0.60%	0.58%	0.63%	0.78%	0.62%	0.70%	0.65%	1.01%	0.52%	0.40%	0.38%	0.42%	0.44%	0.36%	0.43%	0.60%	0.81%	0.58%	0.68%	0.77%	0.76%	0.71%	0.69%	0.75%	0.87%	0.78%	0.60%	0.78%	0.76%	0.73%	0.75%	0.77%	0.76%	0.71%	0.69%	0.75%	0.87%	0.78%	0.60%	0.78%	0.76%	0.73%	0.75%												
(5) SoftFail	3.90%	4.13%	4.27%	3.93%	4.41%	4.18%	4.62%	4.30%	4.58%	4.26%	3.62%	4.15%	2.39%	2.73%	2.71%	3.16%	2.78%	2.75%	2.88%	4.37%	4.08%	2.84%	3.38%	3.22%	3.98%	2.81%	3.06%	3.88%	2.69%	3.20%	2.66%	2.72%	3.50%	4.97%	3.84%	3.63%	3.09%	3.84%	4.01%	3.62%	3.25%	3.63%	2.78%	2.86%	2.85%	3.17%	2.25%	2.65%	3.09%	3.84%	4.01%	3.62%	3.25%	3.63%	2.78%	2.86%	2.85%	3.17%	2.25%	2.65%												
(6) TempError	0.18%	0.91%	0.11%	0.14%	0.11%	0.11%	0.28%	0.13%	0.28%	0.84%	0.76%	0.52%	1.51%	0.38%	0.13%	0.27%	0.16%	0.29%	0.10%	0.15%	0.17%	0.16%	0.61%	0.25%	0.18%	0.09%	0.05%	0.09%	0.15%	0.09%	0.08%	0.08%	0.08%	0.14%	0.09%	0.13%	0.12%	0.10%	0.20%	0.21%	0.22%	0.19%	0.20%	0.23%	0.25%	0.29%	0.33%	0.36%	0.12%	0.10%	0.20%	0.21%	0.22%	0.19%	0.20%	0.23%	0.25%	0.29%	0.33%	0.36%												
(7) PermError	0.50%	0.77%	0.97%	0.84%	0.88%	0.78%	0.92%	0.71%	0.87%	0.77%	0.70%	1.03%	1.28%	0.82%	0.60%	0.67%	0.48%	0.49%	0.48%	0.43%	0.53%	0.59%	0.57%	0.52%	0.67%	0.43%	0.45%	0.45%	0.69%	0.64%	0.50%	0.50%	0.50%	0.46%	0.51%	0.58%	0.39%	0.54%	0.51%	0.51%	0.60%	0.36%	0.40%	0.66%	0.55%	0.45%	0.51%	0.42%	0.39%	0.54%	0.51%	0.51%	0.60%	0.36%	0.40%	0.66%	0.55%	0.45%	0.51%	0.42%												



* With cooperation of domestic ISP 9 companies, MIC compiled.
 * In the E-mail which is circulating.

The situation of SPF (as of September 2023)

	2020年												2021年												2022年												2023年																
	1月	2月	3月	4月	5月	6月	7月	8月	9月	10月	11月	12月	1月	2月	3月	4月	5月	6月	7月	8月	9月	10月	11月	12月	1月	2月	3月	4月	5月	6月	7月	8月	9月	10月	11月	12月	1月	2月	3月	4月	5月	6月	7月	8月	9月								
① The number of data ISP	7	7	7	7	7	7	7	7	7	7	7	7	7	7	7	8	8	8	8	8	8	9	9	9	9	9	9	9	9	9	9	9	9	9	9	9	9	9	9	9	9	9	9	9	9	9	9	9	9	9	9	9	9
② the ratio of SPF																																																					
① None	7.62%	8.46%	9.48%	11.36%	7.43%	5.41%	7.30%	5.46%	5.67%	5.86%	8.12%	7.33%	7.93%	8.85%	7.82%	6.04%	5.08%	5.21%	7.83%	7.53%	5.49%	4.29%	4.01%	3.96%	4.39%	4.88%	4.71%	3.21%	5.94%	4.61%	3.61%	3.82%	3.15%	3.23%	3.00%	3.27%	2.38%	3.31%	3.24%	3.59%	4.28%	3.94%	2.95%	2.78%	2.46%								
② Neutral	0.87%	0.62%	0.26%	0.31%	0.28%	0.30%	0.30%	0.24%	0.25%	0.16%	0.19%	0.17%	0.19%	0.17%	0.19%	0.14%	0.07%	0.07%	0.06%	0.06%	0.20%	0.07%	0.07%	0.09%	0.09%	0.12%	0.09%	0.07%	0.08%	0.07%	0.10%	0.07%	0.13%	0.08%	0.07%	0.14%	0.08%	0.14%	0.24%	0.13%	0.33%	0.12%	0.26%	0.18%	0.24%								
③ Pass	86.37%	86.01%	85.10%	81.57%	87.14%	89.36%	87.16%	88.54%	88.89%	88.84%	86.49%	87.96%	86.15%	85.57%	86.78%	88.37%	90.31%	90.05%	87.75%	86.16%	88.17%	88.14%	89.22%	89.72%	89.05%	88.30%	87.75%	89.04%	86.23%	88.71%	88.96%	88.40%	88.92%	87.67%	88.21%	89.80%	91.29%	87.44%	87.99%	86.39%	86.55%	84.87%	86.31%	86.19%	83.38%								
④ Fail	0.72%	0.64%	0.76%	0.93%	0.84%	0.78%	0.87%	1.01%	0.88%	0.95%	1.08%	0.88%	1.08%	1.11%	1.53%	1.82%	1.25%	1.15%	0.92%	1.09%	1.01%	1.32%	1.19%	1.32%	1.23%	1.19%	1.71%	1.90%	1.30%	1.26%	1.37%	1.59%	1.55%	2.06%	2.63%	2.34%	2.38%	2.32%	2.19%	3.22%	2.98%	4.38%	2.85%	3.80%	7.96%								
⑤ SoftFail	3.50%	3.22%	3.34%	4.49%	3.37%	3.11%	3.10%	3.29%	3.00%	3.14%	2.95%	2.69%	3.05%	2.86%	2.98%	2.90%	2.75%	2.85%	2.95%	4.28%	3.64%	4.54%	4.77%	4.00%	4.44%	4.82%	5.12%	4.98%	5.85%	4.79%	4.24%	3.89%	3.93%	4.44%	5.28%	3.90%	3.28%	6.25%	5.15%	5.60%	5.77%	6.15%	6.91%	6.57%	5.42%								
⑥ TempError	0.46%	0.57%	0.42%	0.54%	0.39%	0.41%	0.42%	0.33%	0.34%	0.32%	0.46%	0.27%	0.31%	0.24%	0.19%	0.17%	0.12%	0.08%	0.07%	0.15%	0.12%	0.07%	0.15%	0.17%	0.22%	0.12%	0.15%	0.17%	0.14%	0.15%	1.19%	1.70%	1.73%	2.03%	0.41%	0.09%	0.10%	0.16%	0.76%	0.62%	0.11%	0.13%	0.06%	0.05%	0.05%								
⑦ PermError	0.46%	0.47%	0.65%	0.79%	0.55%	0.64%	0.84%	1.08%	0.99%	0.64%	0.64%	0.70%	1.28%	1.19%	0.51%	0.57%	0.41%	0.59%	0.42%	0.74%	1.36%	0.56%	0.58%	0.74%	0.58%	0.60%	0.46%	0.62%	0.46%	0.40%	0.52%	0.54%	0.59%	0.50%	0.39%	0.46%	0.50%	0.37%	0.43%	0.45%	0.37%	0.41%	0.67%	0.42%	0.49%								



* With cooperation of domestic ISP 9 companies, MIC compiled.
 * In the E-mail which is circulating.